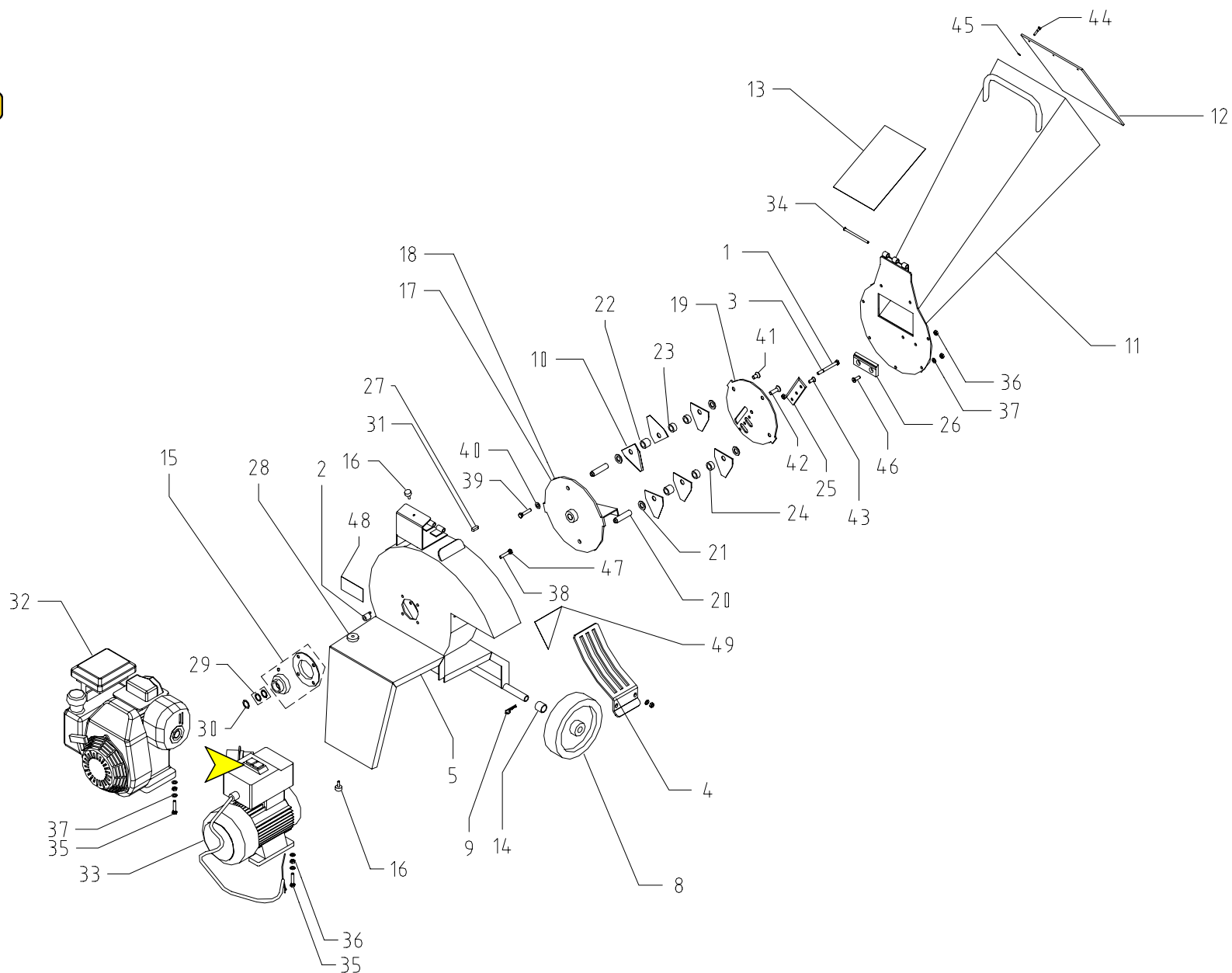


BIO 50 E / B



BIO 50 E / B



Pos.	Denomination	Q.tè	Code
1	Vis TE M 8x80 (E)	1	50000880
2	Entretoise L=28 (B)	4	060004101
3	Vis TCEI 5/16x3" ½ (B)	1	505160312
4	Crible	1	050001011
5	Chassis machine	1	050001201
8	Roues	2	070000100
9	Cheville R 2.5	2	530005501
10	Couteaux Bio Prof TR 3	6	010105001
11	Tremie	1	050001105
12	Protection caoutchouc	1	080000300
13	Auto-collant	1	000000001
14	Rondelle Sp.15	2	050001015
15	Support SBPF 206 (B)	1	550002031
16	Pied caoutchouc 20x10	2	013900004
17	Rotor (E)	1	050010021
18	Rotor (B)	1	050010031
19	Disque rotor	1	050004000
20	Goujons rotor	2	050004001
21	Rondelle Ø16x3	4	511120020
22	Entretoise H=21	2	010105000
23	Entretoise H=12.5	2	080007070
24	Entretoise H=11.5	2	080007080
25	Lame tranche-couteaux	1	013300800
26	Contrelame	1	050004002
27	Clef (B)	1	530003116
28	Entretoise sp.15 (E)	4	050003515
29	Entretoise PS Ø19 (B)	X	060002200
30	Entretoise PS Ø20 (B)	1	060002201
31	Clef (E)	1	530003010
32	Moteur essence GC (B)	1	014100003
33	Moteur électrique (E)	1	015300210
34	Goujon	1	011810002
35	Vis TE M8x40	4	501840010
36	Ecrou M8	16	520002008
37	Rondelle Ø 8x24	18	510003008
38	Vis TE 5/16x2" UNF (B)	4	505160200
39	Vis TE M10x1x15	2	500010151
40	Rondelle Ø 10x30	2	510010000

Pos.	Denomination	Q.tè	Code
41	Vis TSPEI M10x20	2	500018810
42	Vis TSPEI M10x35	1	500001036
43	Vis TSPEI M8x20	3	500011008
44	Rivet Ø4.9x16 Al	3	530002000
45	Rondelle Ø5x15	3	510003005
46	Vis TSPEI M8x25	2	500011508
47	Vis TE M8x20 (E)	4	500008008
48	Auto-collant	1	000000041
49	Auto-collant	1	000000004
50	Rondella di fermo	1	510000844